

**Meccanica**



## **KENT KGS 1532D**

Machine occasion    N° de stock : **A3472-1**



Anno

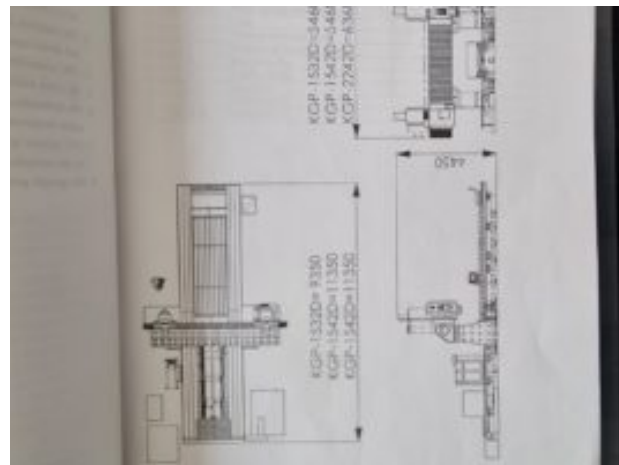
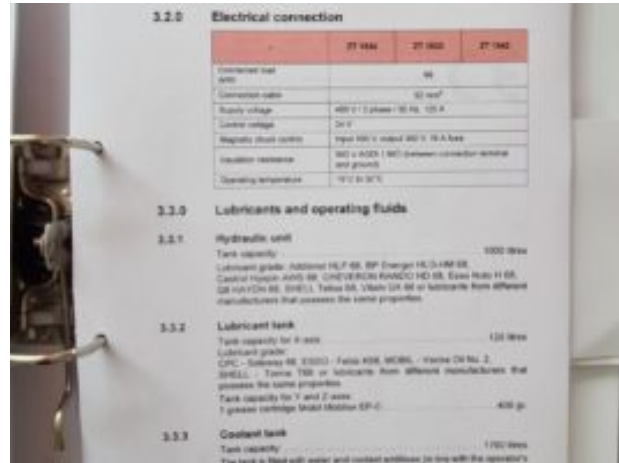
2006

Corsa longitudinale

3200 mm

Corsa trasversale	1700 mm
Corsa verticale	700 mm
Superficie della tavola	3200x1500 mm
Dimensioni degli abrasivi	500x120x203,2 mm
Avanzamento del lavoro	5000 à 30000 mm/min
Motore del mandrino	32 HP
Dimensioni	11030x6075x4450 mm
Peso	32400 kg







3.1.0 Machine data

	2T 1804	2T 1832	2T 1860
Spindling wheel (mm)	2400 x 1800	2200 x 1800	4200 x 1800
Reference height (mm)	1800		
Length of bed (mm)	2000	2000	4000
Distance from table to middle of spindle (mm)	1100		
Clearance between the table and the spindle (mm)	2000		
Magnetic chuck dimensions (mm)	2400 x 1800	2200 x 1800	4200 x 1800
Table load (incl. integral top)	6000	8000	
Continuous feed (longitudinal axis) (mm/min)	5000 to 50000		
Continuous feed (transverse axis) (mm/min)	2000		
Continuous feed (vertical axis) (mm/min)	2000		
Spindling wheel dimensions (mm)	300 x 1000 x 300.0		
Spindling spindle motor output (kW)	30		
Control range of the grinding spindle motor (%)	1000 to 20000		
Machine weight (kg)	90000	100000	420000
Spindle requirement (mm)	6000	11000	19000
Spindle requirement (mm) width	9000		
Spindle requirement (mm) height	4400		



