

**Mechanics**



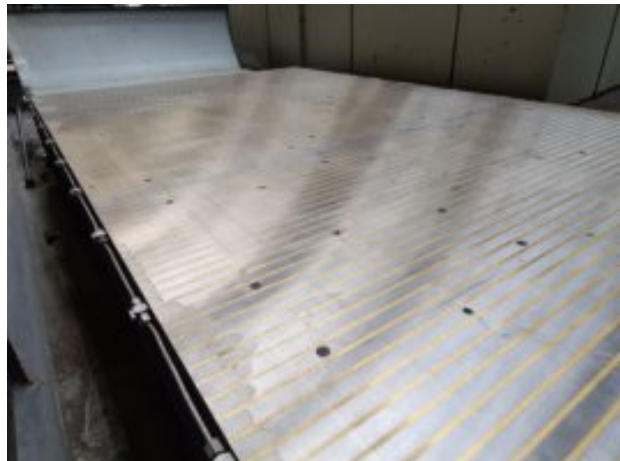
**KENT KGS 1532D**

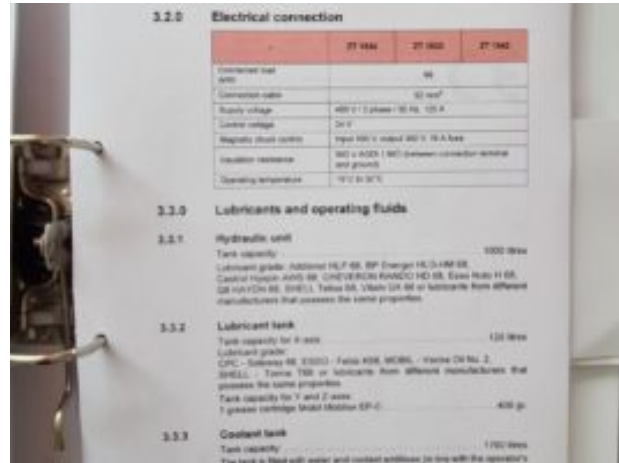
Machine occasion      N° de stock : **A3472-1**



Year	2006
Longitudinal travel	3200 mm

Cross travel	1700 mm
Vertical stroke	700 mm
Table area	3200x1500 mm
Grinding wheel size	500x120x203,2 mm
Feeding speed	5000 à 30000 mm/mn
Spindle motor	32 KW
Dimensions	11030x6075x4450 mm
Weight	32400 Kg







3.1.0 Machine data

	2T 1604	2T 1632	2T 1662
Grinding wheel (mm)	2400 x 1500	2200 x 1500	4200 x 1500
Reference height (mm)	1500		
Length of bed (mm)	2000	2000	4000
Distance from table to middle of spindle (mm)	1100		
Clearance between the table (mm)	2000		
Magnetic chuck dimensions (mm)	2400 x 1500	2200 x 1500	4200 x 1500
Table load (t) - integral top	6000	8000	
Continuous feed - longitudinal axis (mm/min)	5000 to 50000		
Continuous feed - latitudinal axis (mm/min)	2000		
Continuous feed - longitudinal axis (mm/min)	2000		
Grinding wheel dimensions (mm)	300 x 1000 x 300.3		
Grinding spindle motor output (kW)	30		
Control range of the grinding spindle motor (%)	1000 to 20000		
Machine weight (kg)	90000	100000	42000
Spindle requirement (mm)	6000	11000	13000
Spindle requirement (mm) - width	9000		
Spindle requirement (mm) - height	4400		

FANUC Page 1 / 1

**MAINTENANCE SERVICE NOTE (CNC)**

MODEL: FANUC T1604 (2T)

SERIAL NUMBER: 6001 00010000

DATE: 04/10/2004

ORDER NUMBER: 170000 / 2T 1604

EXPECTED DELIVERY DATE:

DESTRUCTION: YES/NO

RE MODEL: FANUC SERIES 21 M MODEL 6

RE SERIAL NUMBER: 00000000 / 170000

RE ORDER NUMBER: 000 10000 / 2T 1604

RE SERIAL: 000 0000 0 00 00

RE USER:

METALLISATION: NOT REQUIRED

METALLISATION DATE:



