

## Flachschleifmaschine



# KENT KGS 1532D

Machine occasion      N° de stock : **A3472-1**



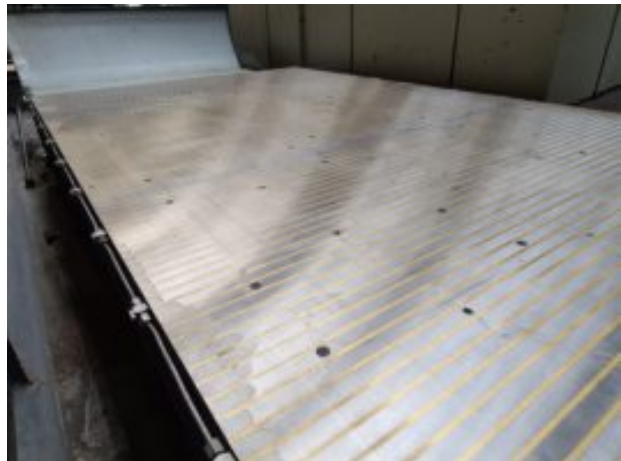
Jahr

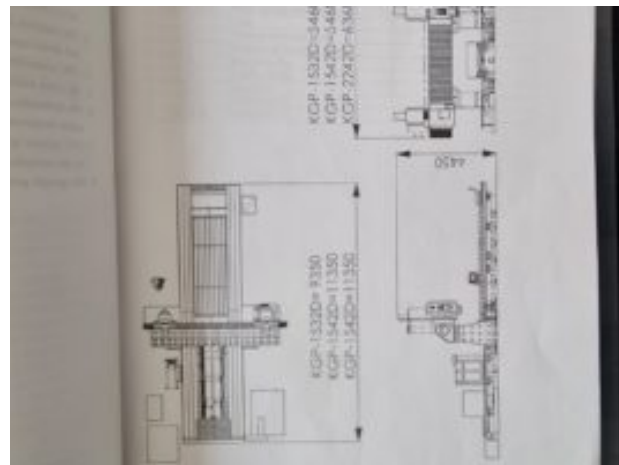
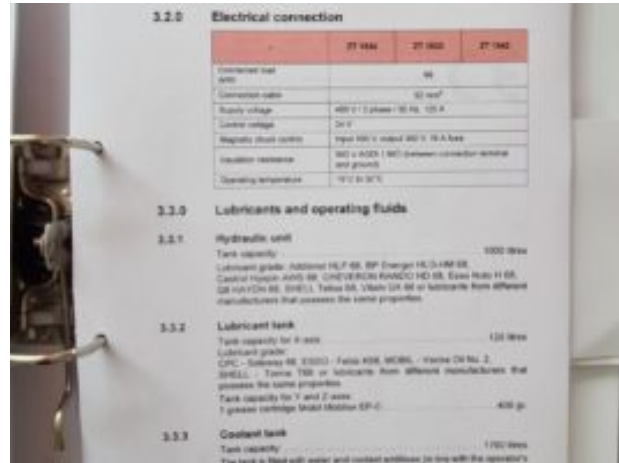
2006

Längsbewegung

3200 mm

|                            |                    |
|----------------------------|--------------------|
| Querverschiebung           | 1700 mm            |
| Vertikaler Hub             | 700 mm             |
| Tischfläche                | 3200x1500 mm       |
| Schleifscheibenabmessungen | 500x120x203,2 mm   |
| Vorschubgeschwindigkeit    | 5000 à 30000 mm/mn |
| Spindelmotor               | 32 KW              |
| Abmessungen                | 11030x6075x4450 mm |
| Gewicht                    | 32400 Kg           |







3.1.0 Machine data

|  | 2T 1804            | 2T 1832     | 2T 1862     |
|--|--------------------|-------------|-------------|
| Spindling wheel (mm)                             | 2400 x 1800        | 2200 x 1800 | 4200 x 1800 |
| Reference height (mm)                            | 1800               |             |             |
| Length of bed (mm)                               | 2000               | 2000        | 4000        |
| Distance from table to middle of spindle (mm)    | 1100               |             |             |
| Clearance between the table and the spindle (mm) | 2000               |             |             |
| Magnetic chuck dimensions (mm)                   | 2400 x 1800        | 2200 x 1800 | 4200 x 1800 |
| Table load (t) - integral top                    | 6000               | 8000        |             |
| Continuous feed - longitudinal axis (mm/min)     | 5000 to 50000      |             |             |
| Continuous feed - transverse axis (mm/min)       | 2000               |             |             |
| Continuous feed - longitudinal axis (mm/min)     | 2000               |             |             |
| Spindling wheel dimensions (mm)                  | 300 x 1000 x 300.5 |             |             |
| Spindling spindle motor output (kW)              | 30                 |             |             |
| Control range of the grinding spindle motor (%)  | 1000 to 20000      |             |             |
| Machine weight (kg)                              | 90000              | 100000      | 420000      |
| Spindle requirement (mm)                         | 6000               | 11000       | 19000       |
| Spindle requirement (mm) - width                 | 9000               |             |             |
| Spindle requirement (mm) - height                | 4400               |             |             |



